

2018 MIRAE OHSUNG COMPANY PROFILE





CONTENTS

1 Company Introduction

Company Overview
Management Principle
Investment Philosophy
Consulting Philosophy
Vision
Background of establishment

2 Business area

Affiliates
Business Field

3 Investment Status

Investment Status
Investee companies

4 Future Plns

Goals
Vision



MIRAE
OHSUNG

Company Introduction

COMPANY OVERVIEW



MIRAE OHSUNG Group brings potential value to promising companies through enterprise consulting, direct&indirect investment, financing, and overseas infrastructure connections with qualified financial expertises.

With an objective to maximize company's asset value, Mirae Ohsung actively engage in companies' M&A, A&D, backdoor listing, IPO and SPAC listing.

MANAGEMENT PRINCIPLE



1

**Based on consideration,
respect, and trust**

2

**With Mutual
partnership**

3

**As a reliable investment
partner with organizational
capability and professionalism**

4

**Create and Maximize
enterprise value**

INVESTMENT PHILOSOPHY



CONSULTING PHILOSOPHY

Win-Win consulting

**Maintaining an attitude
as a Financial Investor(FI)**

**Direct control of the
financial affairs**

BACKGROUND OF ESTABLISHMENT

1

Investment Banking is expected as worldwide economic trend

- Targeting the trending financial market

2

The Stock Market and the OTC stock Market turn into a red ocean

- Blue ocean strategy of the Stock Market and the Over-the-Counter stock Market

3

Small and medium-sized companies are suffering from poor growth in spite of an excellent technical skills

- Discovering and incubating promising companies with competitive abilities

4

Only few investors who have information earn return on investment

- Generating information in the center of information

5

Sign of destroyed OTC Stock market system by assymetry information and irresponsible investment

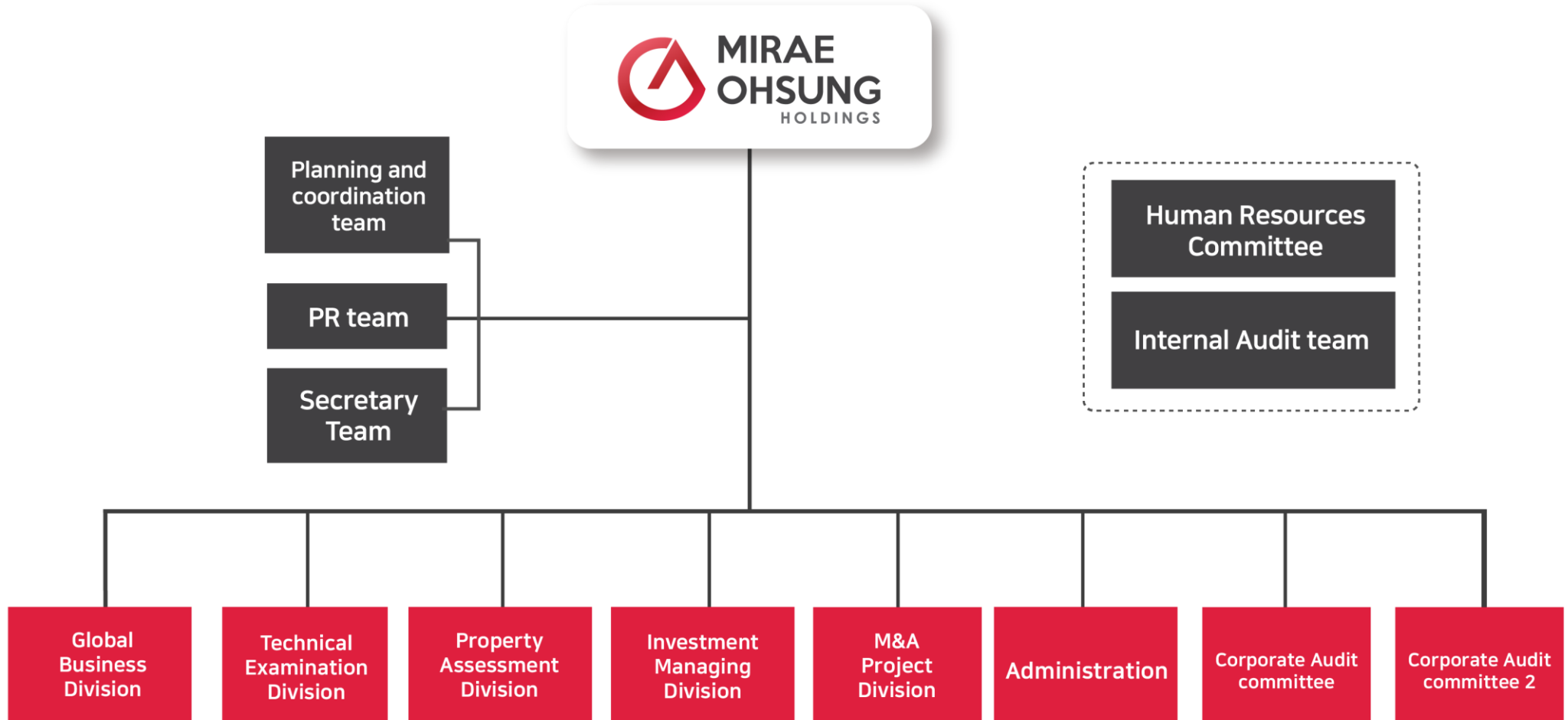
- Necessity of setting the investment standards

6

Lack of professional M&A consulting firm

- Demand of a sustainable M&A company

ORGANIZATION CHART

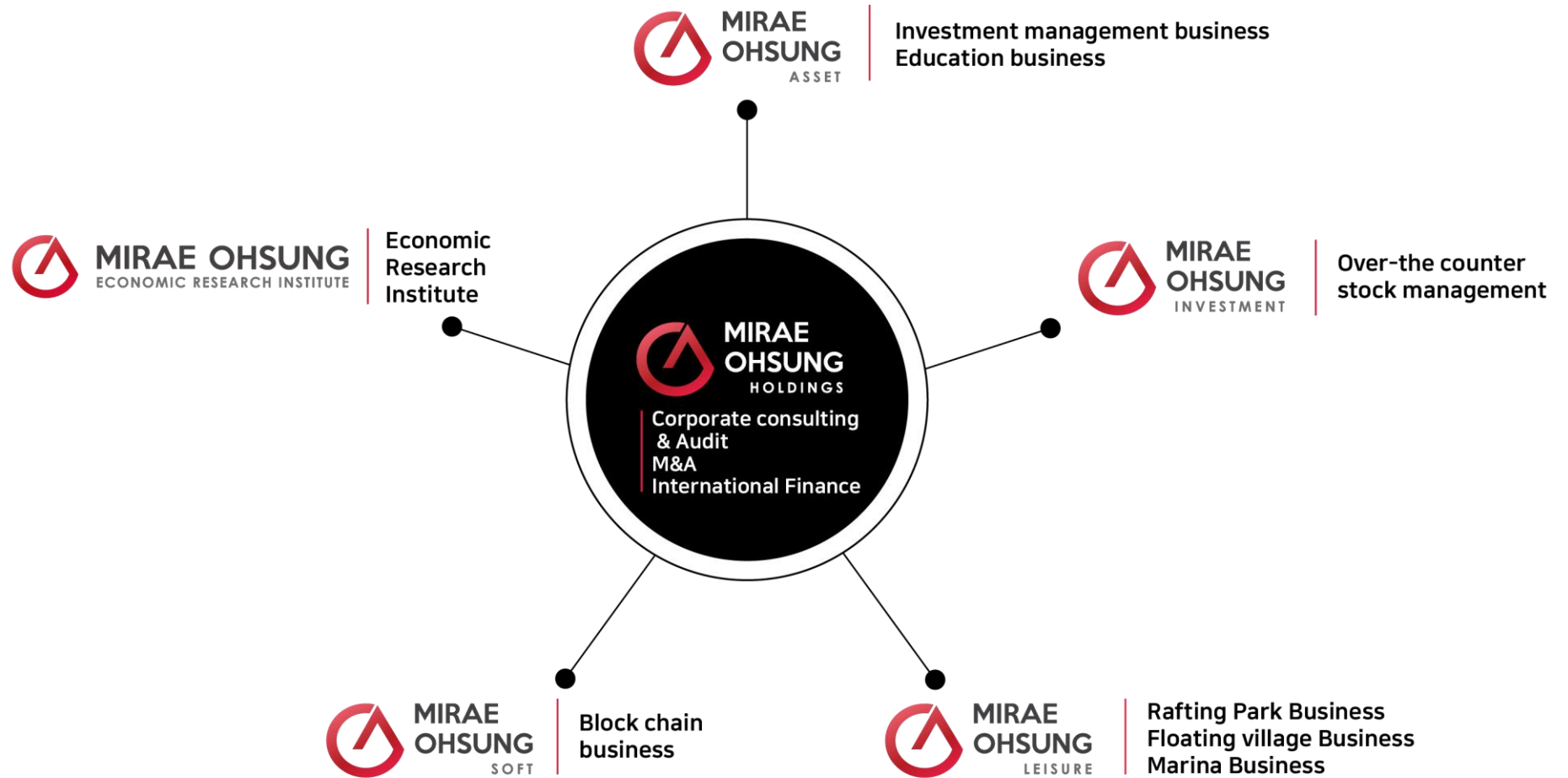


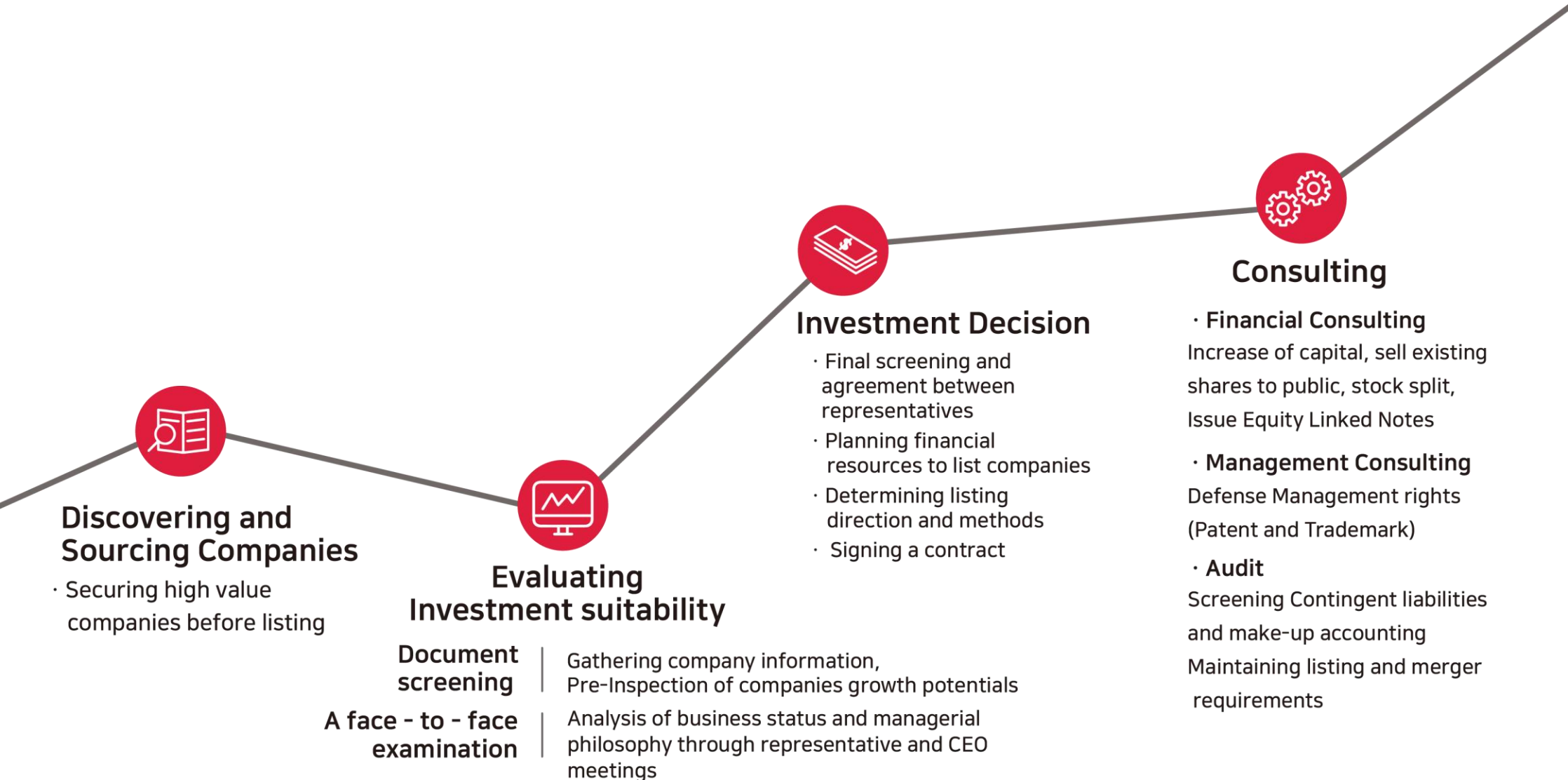


MIRAE
OHSUNG

Business Area

AFFILIATES





Discovering and Sourcing Companies

- Securing high value companies before listing

Evaluating Investment suitability

- Document screening** | Gathering company information, Pre-Inspection of companies growth potentials
- A face - to - face examination** | Analysis of business status and managerial philosophy through representative and CEO meetings

Investment Decision

- Final screening and agreement between representatives
- Planning financial resources to list companies
- Determining listing direction and methods
- Signing a contract

Consulting

- **Financial Consulting**
Increase of capital, sell existing shares to public, stock split, Issue Equity Linked Notes
- **Management Consulting**
Defense Management rights (Patent and Trademark)
- **Audit**
Screening Contingent liabilities and make-up accounting
Maintaining listing and merger requirements

01

Merge (including partition merging)

As unlisted companies merge with listed companies, unlisted firms are split and unlisted shareholders are taking over new shares issued by listed companies

02

Comprehensive stock exchange

Becoming a complete subsidiary of listed companies with backdoor listing by transferring all unlisted company equity securities to listed companies and issuing new shares

03

Business transfer and capital increase by allocation to third parties(or transfer of stocks)

An unlisted company transfers all or part of its business to a listed company, and a listed company issues new shares or transfers shares to a third-party assigned capital according to payments of funds

04

Assets transfer (stock swap + acquisition of other equity securities) & capital increase by allocation to third parties (or transfer of stocks)

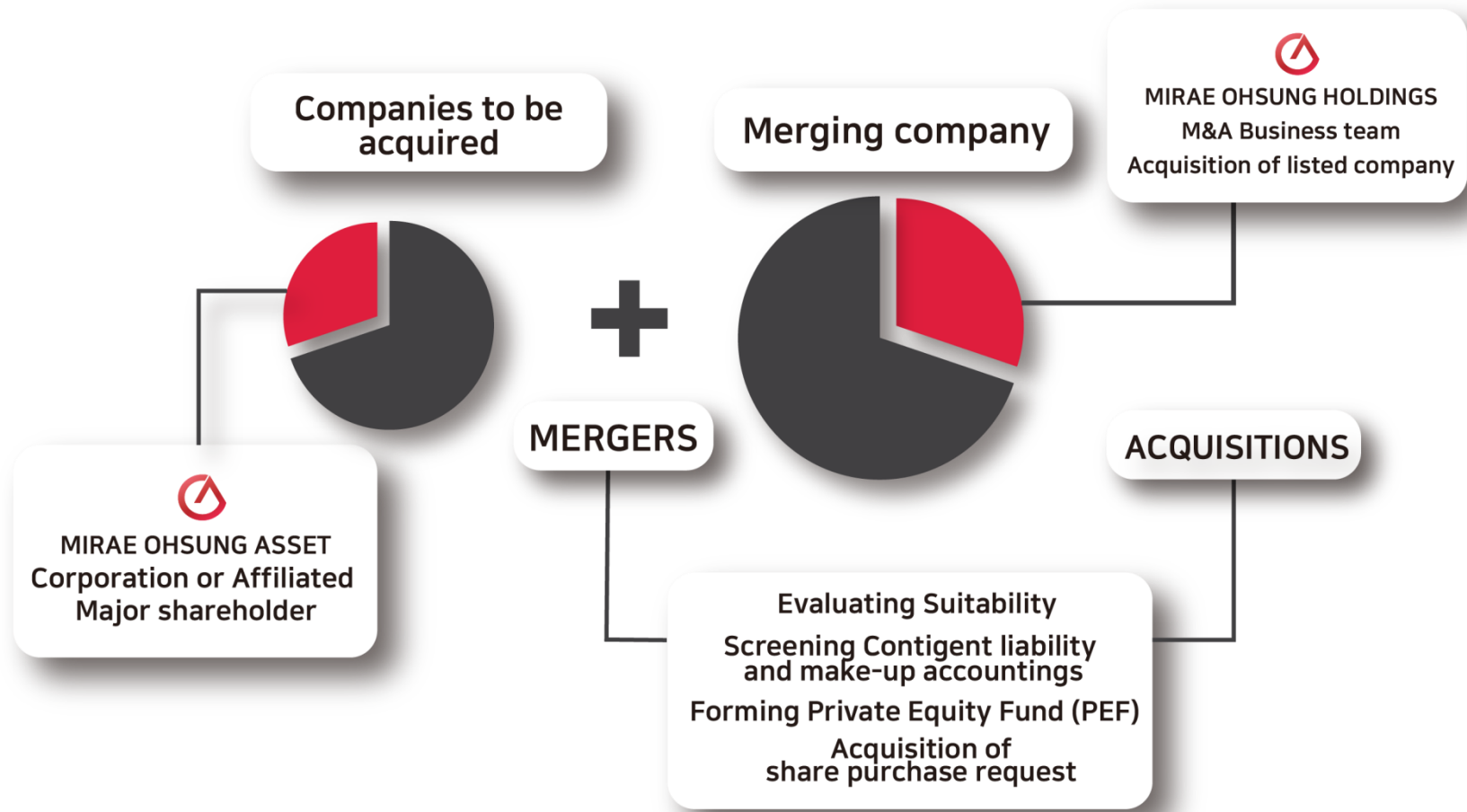
Taking advantage of converting unlisted equity securities into listed stocks by issuing new stocks or transferring shares or selling unlisted shareholders' equity securities to listed companies and participating in third-party assigned capital increase

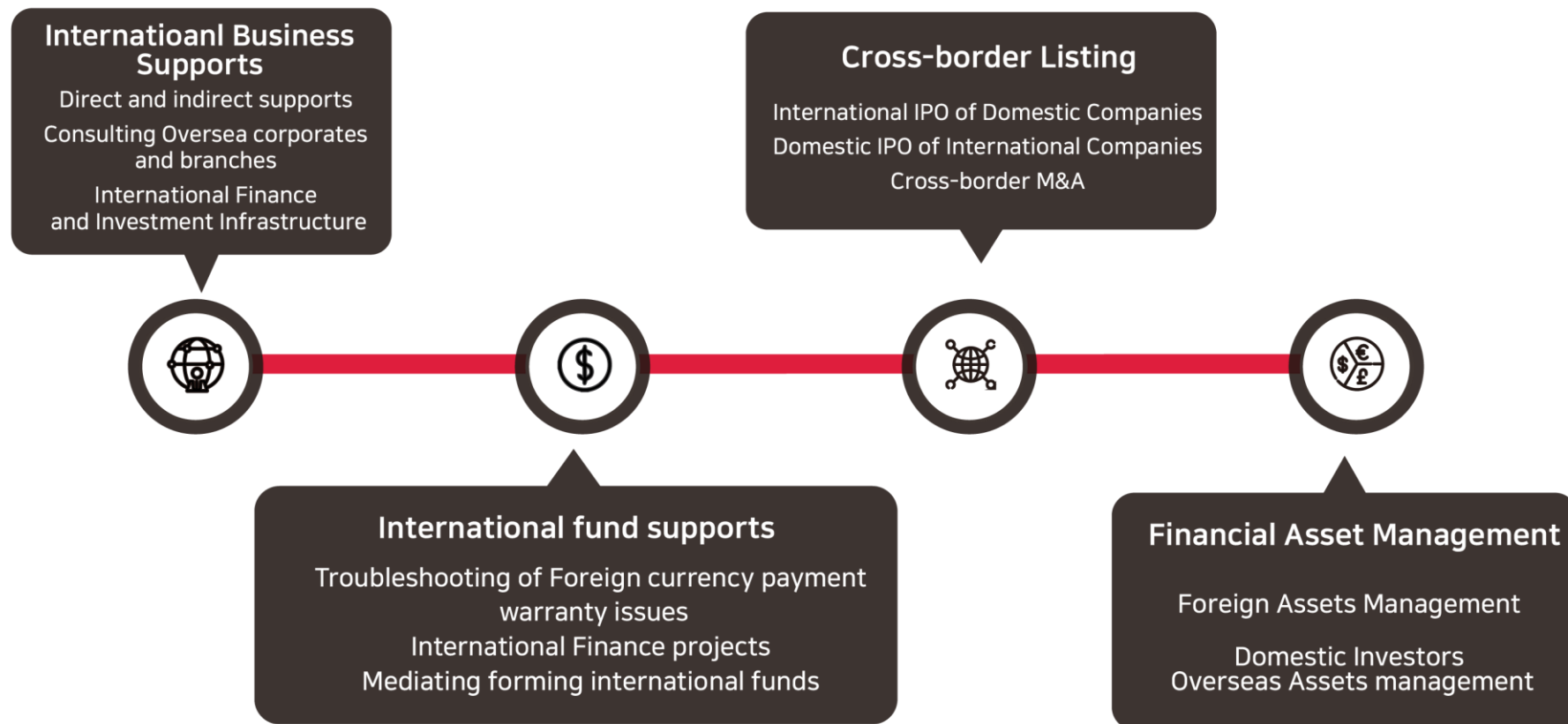
05

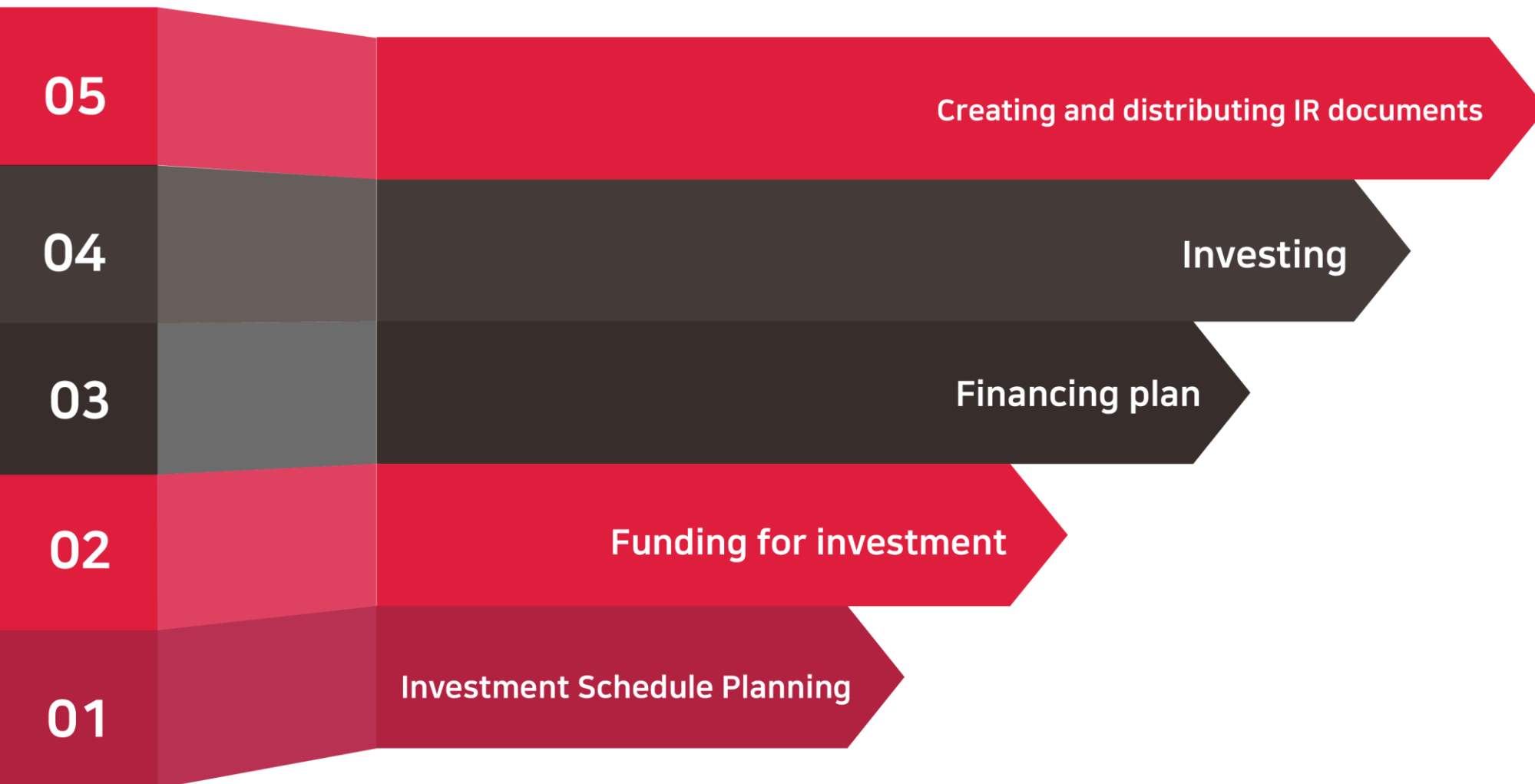
Investment in kind

An unlisted company shareholders pay shares in kind, not in money through participating a third-party assigned capital increase by issuing new stocks

M&A EXAMPLE





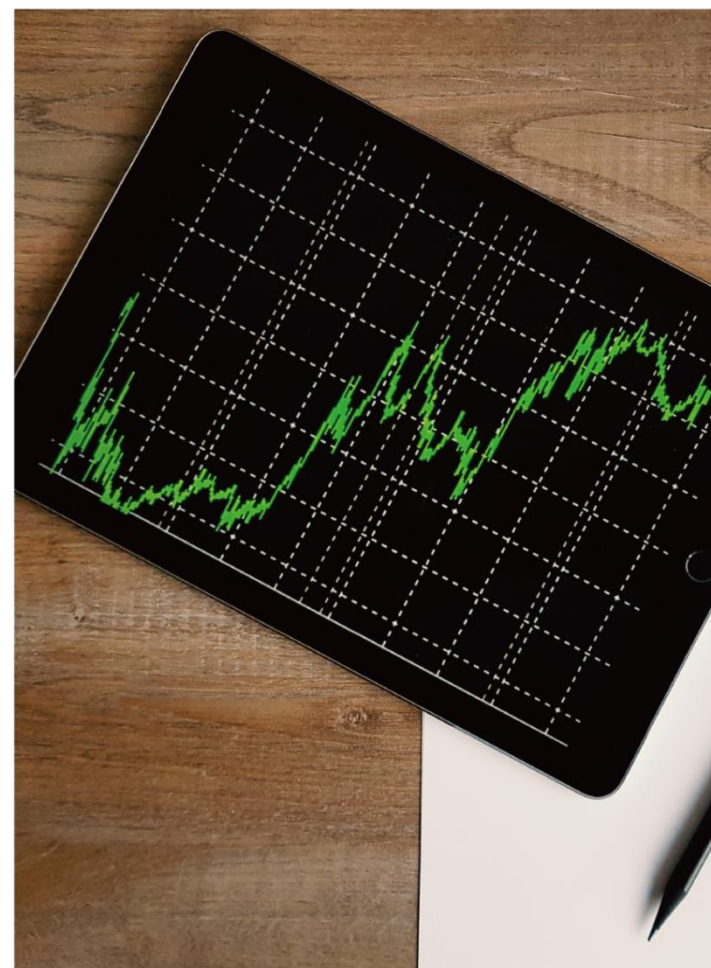


A private Certificate

- Initiating
"OSIC(Over-the-count Stock
Investment Consultant)"
Certificate
- Fostering a professional
OTC counseling organization
- Planning to register as a
national certificate in 2~3
years

Investment Seminar

- Regularly held
investment seminar
- Securing investors
and sales workforces
- Building Investment
membership





Investment consulting

- Confirming investors financial status
- Preventing excessive investment
- Inducing distributed investment



Present continuous profit

- Short-term investment (backdoor listing in 1-2 years)
- Mid term investment (IPO listed in 3-5 years)
- Appropriate Revenue and reinvestment



A large number of investors membership

- Managing investors by items (strengthening minor stockholders' right)
- Sharing investment information within membership and initiating value investment



Exit guide after listing

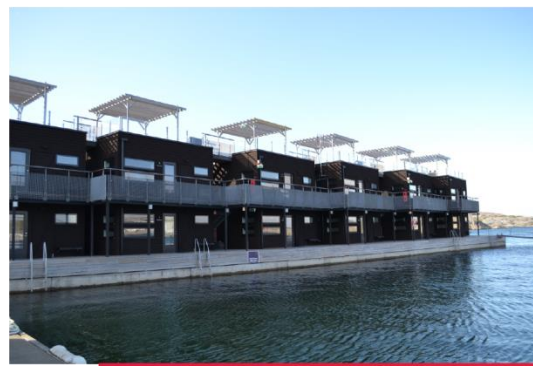
- Selling stock after listing at a certain point

Rafting Park :
Advanced concept of
urban experience leisure





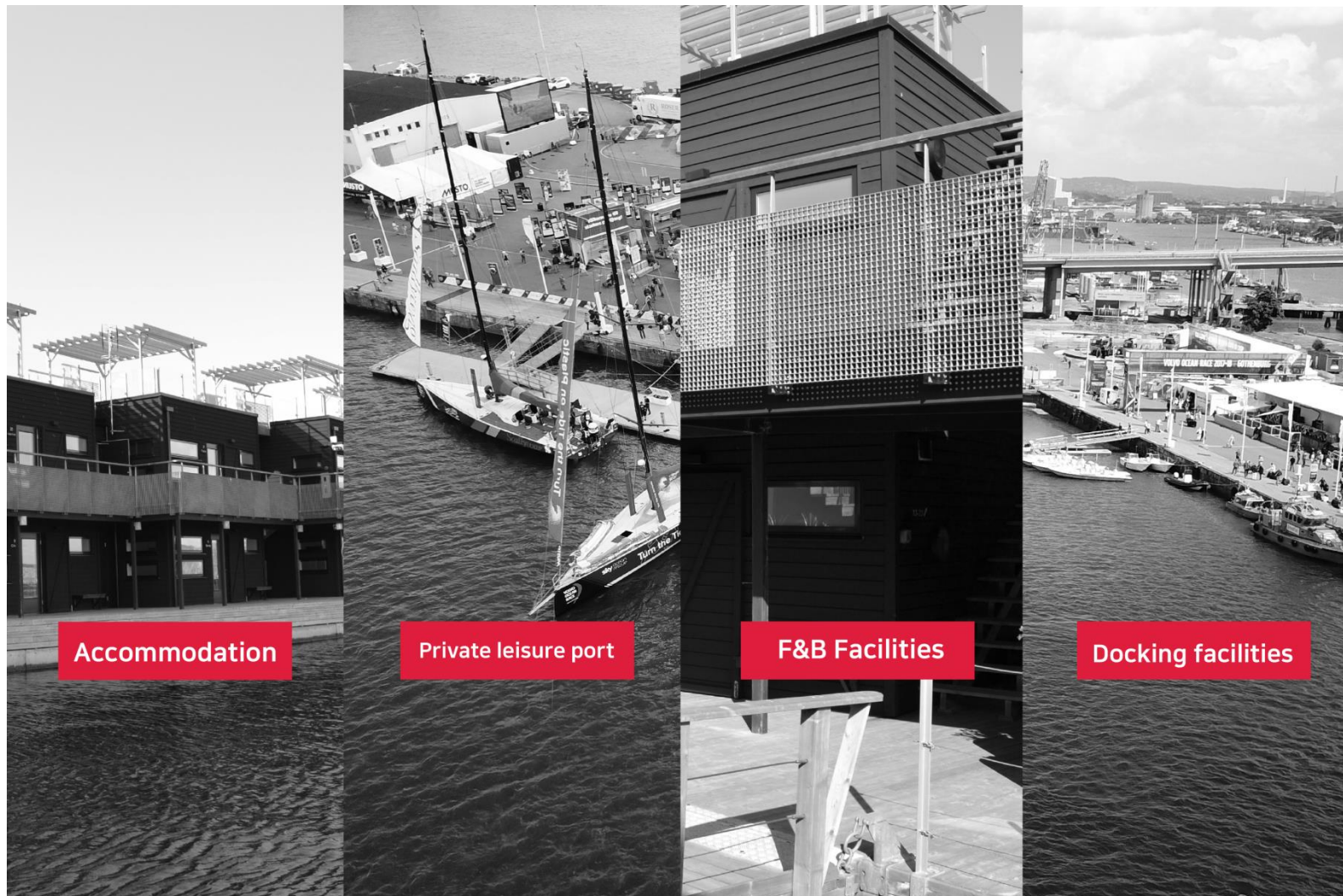
**Future
Residential
Housing**



**Floating
Condominium**



Floating Hotel



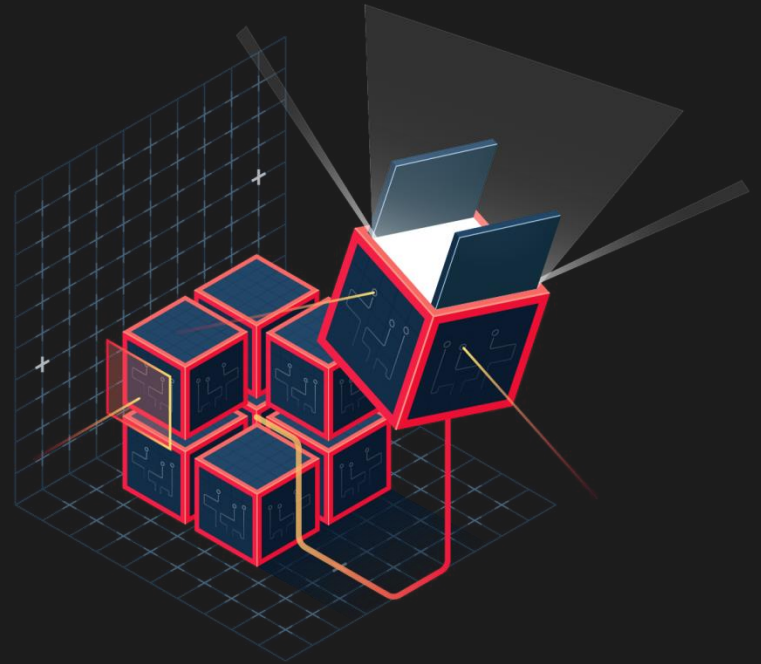
Accommodation

Private leisure port

F&B Facilities

Docking facilities

- Virtual currency system construction
- IoT
- Security Solutions
- Developing a micro mining machine



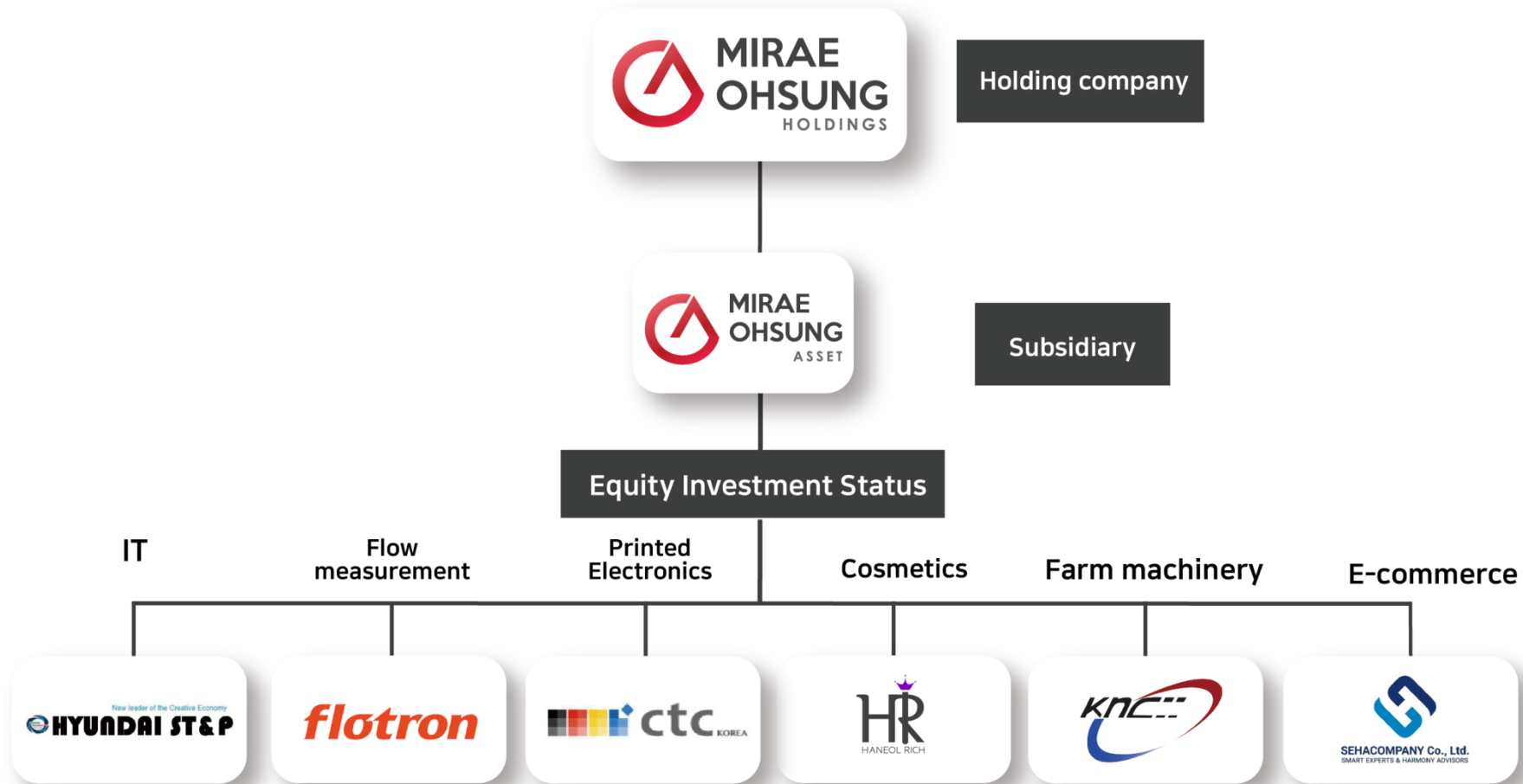


MIRAE OHSUNG Economic Research Institute is conducting economic research domestic and overseas to proactively respond to rapidly changing global sentiment and investment markets. We provide a fundamental solution that can be applied on-site to support MIRAE OHSUNG investment activities.



Investment Status

INVESTMENT STATUS



INVESTEE COMPANIES

Company name	Hyundai ST&P	Representative	Jang Kyung-Hui
Date of establishment	2014.04	Business type	Multimedia optical communication equipment, Measuring instrument
Capital	US\$550,000	Location	Seoul Seocho-gu
Major business (product)	Wi-Fi Test System Bluetooth Tester Wi-Fi + GPS + Bluetooth Test Station VoIP Gateway		



INVESTEE COMPANIES

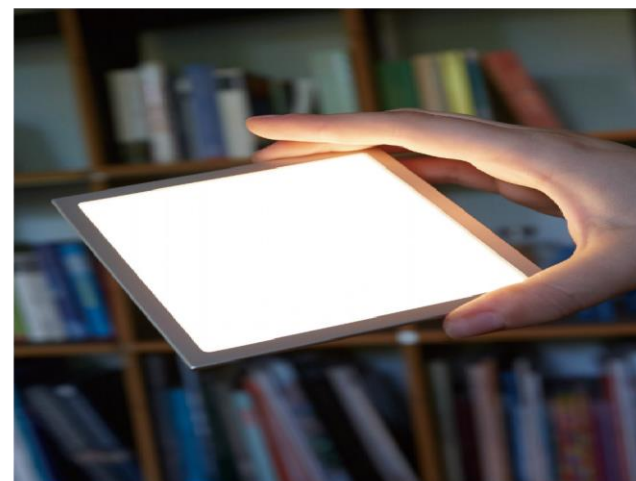
Company name	Flotron	Representative	Jang Guk-Jin
Date of establishment	2009.02	Business type	Flow measurement System Flow Meter or Valve manufacturing
Capital	US\$2.4 million	Location	Seoul Seo-cho gu
Major business (product)	Package system metering, proving, Loading PKG Instrumentation Flowmeter, Valve Actuator(AOV, MOV) Device Machine filter, coalescer. pressure Vessel Piping pipe, forging, plate, Selaing Flow measurement and production of test equipment		
Major exporting countries	Middle East (UAE, Saudi Arabia, Oman, Kuwait etc) Central Asia (Turkmenistan. Uzbekistan etc) Southeast Asia (Thailand, Indonesia, Bangladesh, India) Africa (Ghana, Algeria etc)		

flotron



INVESTEE COMPANIES

Company name	CTC KOREA	Representative	Choi Ji-Soo
Date of establishment	2010.05	Business type	Manufacturing electric boiler Manufacturing instant water heater & air conditional & heater
Capital	US\$4.9 million	Location	Seoul Guro-gu
Major business (product)	Nano coating technology and secondary product (Heating, Lighting, Solar, Battery, Cooling)		
Major exporting countries	China, Asia		



INVESTEE COMPANIES

Company name	Haneol rich	Representative	Yoon Yeo-Jin
Date of establishment	2010.09	Business type	Production and sales of cosmetics Travel agency and Tourism services
Capital	US\$3.6 million	Location	Seoul Mapo-gu
Main product	Hwan yan fei / Hwan an bi		
Major exporting countries	Southeast Asia (China, Thailand, Vietnam, Indonesia, Bangladesh, India etc)		



INVESTEE COMPANIES

Company name	KNC	Representative	Kim Hyun-Sun
Date of establishment	2008.01	Business type	The casting facility of automobile wheels Supplying automobile parts Peeling wheel coating
Capital	US\$360,000	Location	Wanju
Main product	Automobile wheel casting and testing facility Dividing and manufacturing automation system Producing dedicated machine Supplying automobile parts (logistics) AL -Removing the wheel coating		
Major exporting countries	Asia (China, India)		

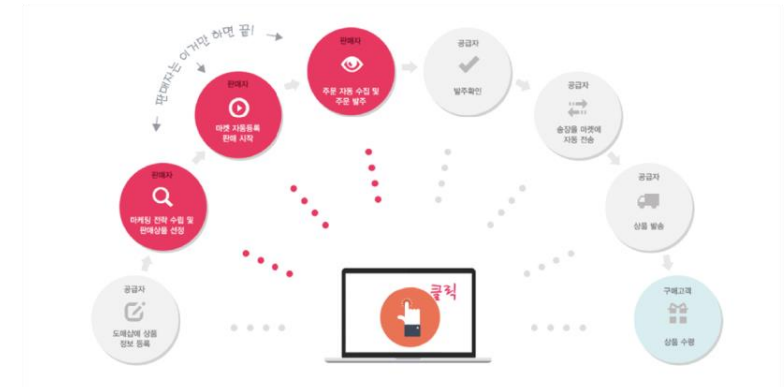


INVESTEE COMPANIES



SEHACOMPANY Co., Ltd.
SMART EXPERTS & HARMONY ADVISORS

Company name	SEHA COMPANY	Representative	Yoo Jin-Yong
Date of establishment	2016.02	Business type	E-Commerce
Capital	US\$1.7 million	Location	Seoul Guro-gu
Main Product	Mallfactory ASP Service &Solution System Intergration Service Establish an Website Online distribution ERP System Intergration system within the company work		

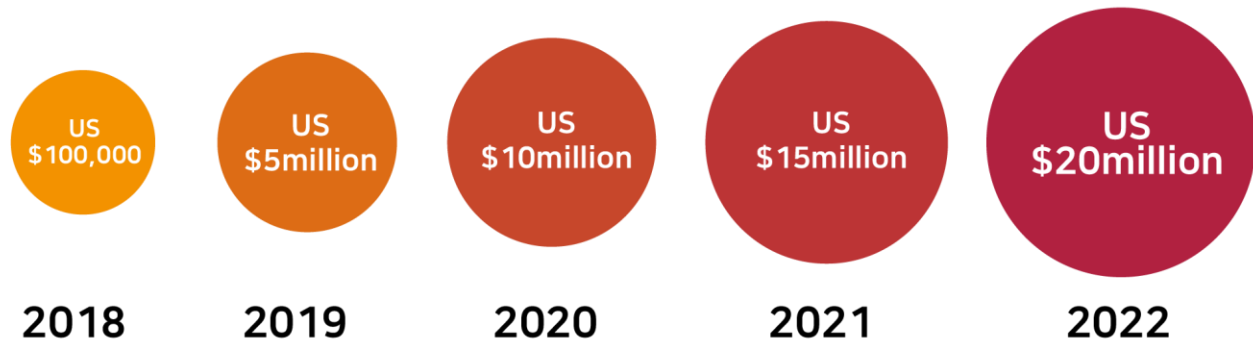




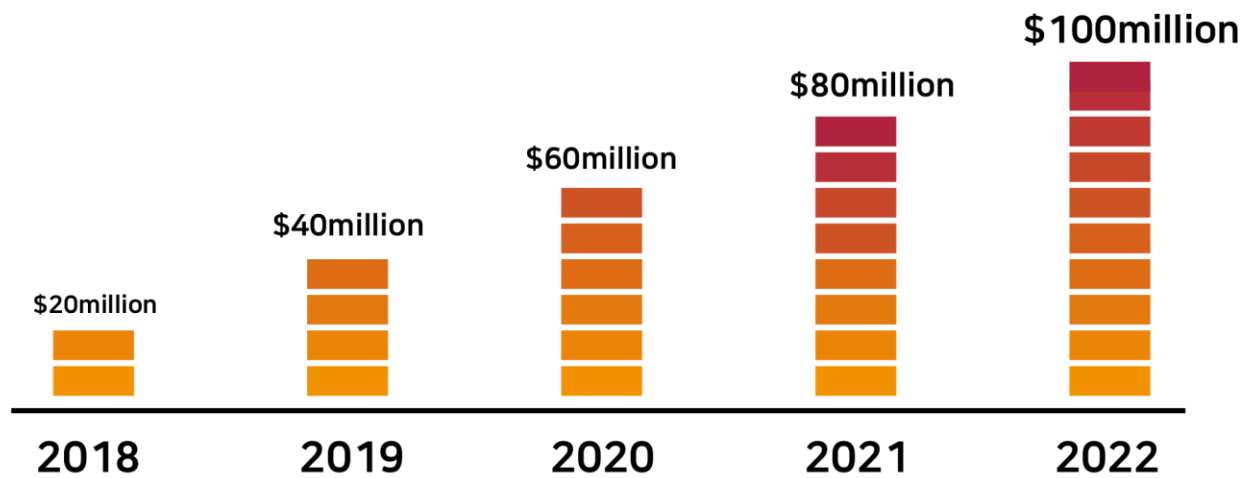
Future Plans

GOALS

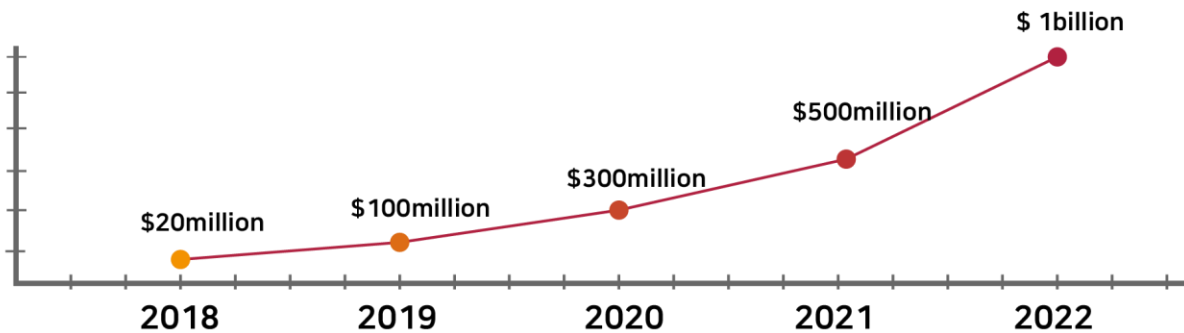
Estimated amount of product sales and consulting



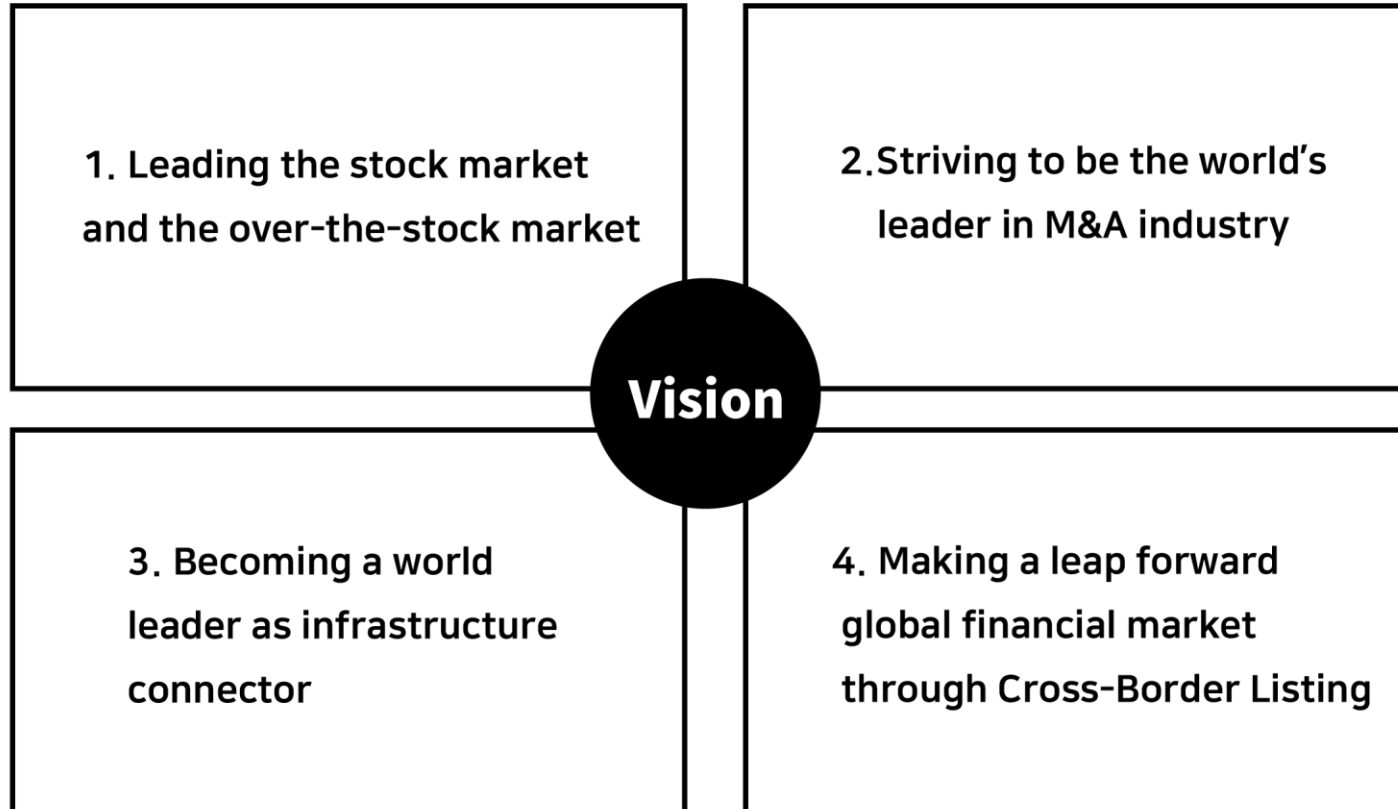
An unlisted company investments



The value of non-listed equity investments



VISION





**MIRAE
OHSUNG**

Mutually Beneficial Partner